

# CORPORATE PROFILE



King Fahad Road, Olaya District,  
Riyadh 11421, KSA

[www.icsarabia.com](http://www.icsarabia.com)



Scan to Learn More

ICS  
العربية ARABIA

رؤية  
2030  
المملكة العربية السعودية  
KINGDOM OF SAUDI ARABIA





**BUILDING A  
SMART FUTURE**

---





ICS Arabia aspires to support the development of smart cities and digital infrastructure in the Kingdom of Saudi Arabia.

## FOREWORD

ICS Arabia is **an innovative, client-driven organization** with a mission to accelerate the development of smart cities and digital infrastructure.

Founded in 2003, ICS initially aimed to become the leader in smart ICT solutions for government and public sectors in the United States. In 2012, ICS Arabia was established in the Kingdom of Saudi Arabia, where we have since grown into a comprehensive solution provider across various business domains, including smart cities, data centers, and digital government.

We envision ICS Arabia as the company of choice not only within the Kingdom of Saudi Arabia but globally. Through innovation and a commitment to challenging conventions, we deliver the most advanced, practical, and cost-effective solutions to our clients. Our dedication extends to government agencies, ministries, public service providers, and commercial industry clients.

Sincerely,  
ICS Arabia, OneTeam

# LEADING INNOVATION

Words from the **Leadership**



## Driving Technological Advancement and Saudization

ICS Arabia drives digital advancement to accelerate the Kingdom’s digital transformation in line with KSA Vision 2030. We are proud to be part of the robust and rapid growth across the Kingdom in various sectors, including the development of smart cities, smart healthcare, and digital government. Our proven track record of successful project delivery has earned us the trust of the Ministry of Interior, the Ministry of Defense, and several other government agencies. ICS Arabia’s leadership and expert team remain committed to delivering outstanding industry services, with a focus on timeliness, budget adherence, and long-lasting innovation.

**Abdullah Almazny**  
Managing Director



## Leveraging Years of Experience and Expertise

At the heart of our mission is a commitment to innovation that delivers real value to our customers. We believe in building not just infrastructure, but intelligent systems that empower businesses to scale, adapt, and thrive. Our expertise spans from cutting-edge data center design to the development of transformative Generative AI solutions—technologies that aren’t just futuristic, but deeply practical. We see Gen-AI as a catalyst for change, and we’re dedicated to harnessing its power to drive progress, unlock new opportunities, and shape a smarter world.

**Syed Muzammil Ahmed**  
Chief Technology Officer

# ICS ARABIA STORY

ICS Arabia’s history reflects a long path of achievements and a journey of success of which we are proud. Founded in 2003 as an ICT solutions provider, ICS has evolved significantly to offer turnkey solutions for large-scale projects in the domains of smart cities, building automation, Tier-certified data centers’ design-build-operate services, smart healthcare technology, and digital government and enterprise solutions.

Bringing Technical Expertise and  
**Cutting-Edge Technology**  
for a Digital Future and  
Helping our Clients Succeed



**20+**  
Years of  
Experience



**90+**  
Unique  
Clients



**130+**  
Projects  
Completed



**2000+**  
Reach Back to Skilled  
Workforce & Operators



**2.5** BILLION  
SAR  
Value of Projects  
Delivered



**85** ENGINEERS  
SEC Approved  
Engineering Staff

## VALUES

Innovation  
Collaboration  
Synergy

## OUR STRENGTH

Trust  
Services Excellence  
USA Reachback

## PIONEERING IN KSA

Artificial Intelligence  
Scaleable Technology  
Next-Gen Data Centers

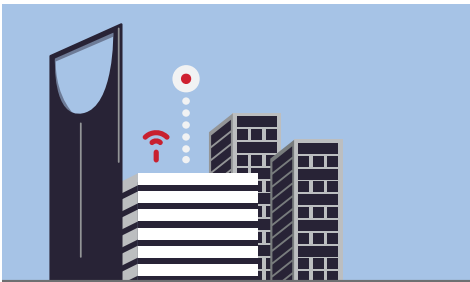


# AT A GLANCE

ICS Arabia Delivers **Innovative Solutions** to Critical Challenges and Drives Technological Advancement to Achieve a Better Tomorrow

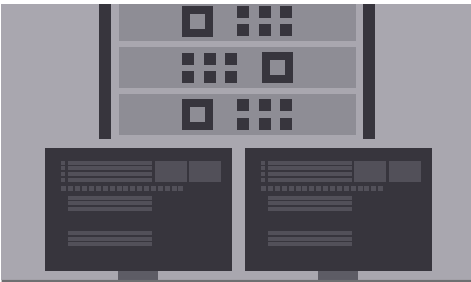
Our Multidisciplinary Teams Allow us to Offer End-to-End Delivery for the Most Complex Projects and Programs in a Timely and Efficient Manner

## CORE BUSINESS DOMAINS



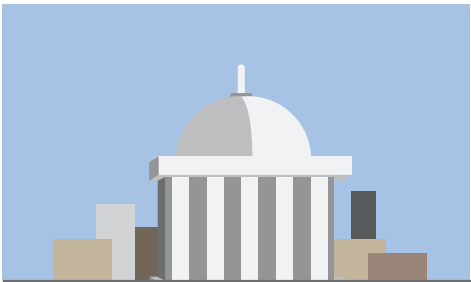
### Smart Cities and Buildings

- Design, Engineering and Construction
- MEP and Fire Safety
- ICT/ELV Engineering
- Building Automation
- Energy Management
- Operations and Maintenance
- Procurement and Project Management



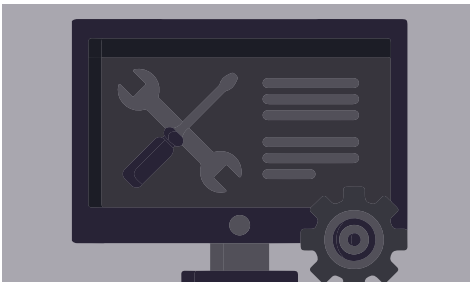
### Mission Critical Facilities

- Data Centers
- Command and Control Centers
- Call Centers
- Uptime Tier Certification
- Day-2 Support
- Cybersecurity
- Cloud-based Services



### Digital Government

- Strategy, Planning and Implementation
- DevOps
- Smart Automation
- Mass Transit/Train Control Systems
- Cloud Transformation
- Data Analytics



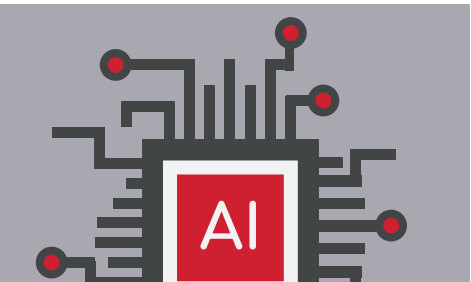
### Digital Enterprise

- IT Modernization and Optimization
- Process and Operations Automation
- App Development
- Cloud Based Integration
- Enterprise Data Management



### Smart Healthcare

- Hospital Management Systems
- Asset Management
- Digitalization
- RTLS/RFID
- Data Centers Design-Build and Operations
- Internet of Medical Things (IoMT)



### Artificial Intelligence

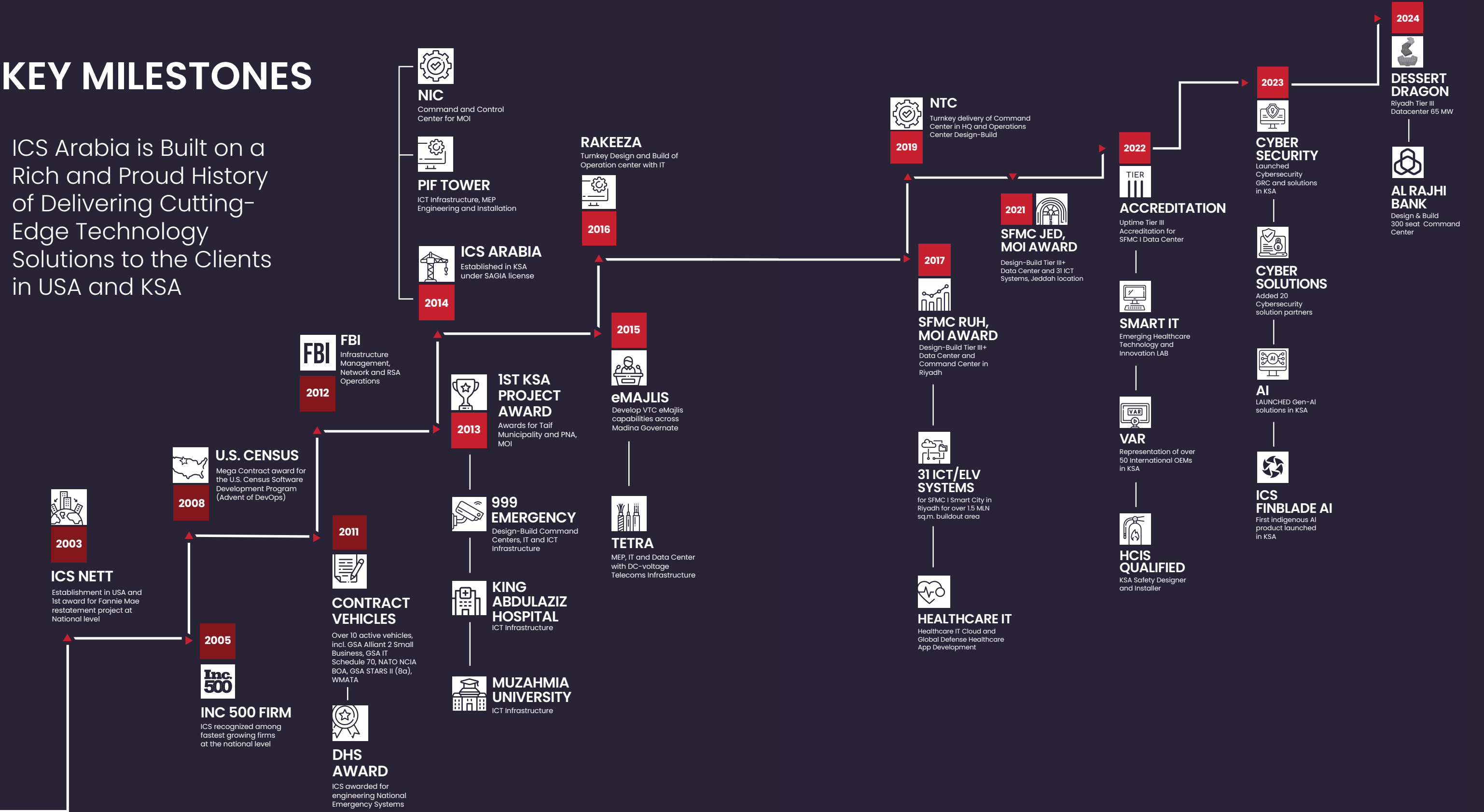
- ICS Arabia LABS
- Finblade AI™
- Machine Learning
- Internet of Things (IoT)
- Predictive Analytics
- Big Data
- Cloud Computing

### End-to-End Delivery

Design → Construction → Procurement → Installation → Commissioning → Operations

# KEY MILESTONES

ICS Arabia is Built on a Rich and Proud History of Delivering Cutting-Edge Technology Solutions to the Clients in USA and KSA



# Success Drivers

## Futureproof

We combine the most advanced technologies, most innovative and unconventional solutions with optimum quality and outstanding services that exceed our customers' missions and goals and meet the needs for future advancement.

## Commitment

We are proud to have an exceptional record of success delivering on our commitments to our customers. Our top priority is to provide total solutions and exceptional service, within the financial and time requirements of our clients.

## Improved ROI

ICS Arabia's focus is to provide cost-effective and long-lasting results. Our engineering innovation and automation solutions help our clients to reduce operational costs, extend assets life cycle and all together reduce the total cost of ownership.

## Innovation

We deliver mass scale projects that require a combination of in-depth knowledge and expertise, most innovative minds and highest level of synergy. We aim to pioneer and constantly introduce new solutions that reshape industry standard for the most advanced future.

## Collaboration

We work together as one team to accelerate ideas and push the limits of creativity to bring the most advanced solutions and optimize value to our customers, partners and our shareholders.

## Talent Development

We develop future industry leaders and support our employees' professional development and career growth. We encourage new ideas and foster a culture of synergy and innovation. We are proud to have a diverse team with local talent.

# COMPLIANCE AND STANDARDS

## Specialized Expertise



### Uptime Institute Tier Accreditation

ICS Arabia's in-house team of Accredited Tier Designer (ATD) certified engineers are experts in all tiering levels for Design, Construction and Operation for Uptime Tier I – IV as per client's requirements.



### Bicsi Standards

ICS is a BICSI Corporate Member, and our engineers ensure that all designs, installations, and integrations of ICT are developed according to the latest standards and guidelines.



### CMMI 3 Certified

We are CMMI Level 3 certified organization, achieving both project and organizational performance objectives.



### LEED Certification

Many ICS Arabia projects earned Silver and Gold LEED certifications and complied with requirements for healthy, highly efficient, and cost-saving green buildings.



### Facility Guidelines Institute

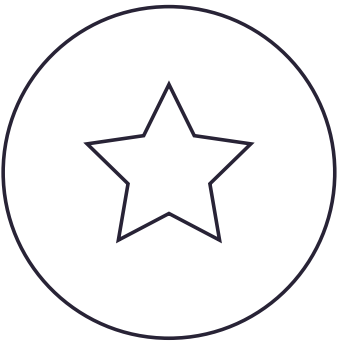
In-depth expertise in planning, design, and construction of hospitals, outpatient facilities, and residential health, care, and support facilities.



### TIA Certification

ICS Arabia TIA Certified engineers assure data center and smart building requirements for the globally-recognized ANSI/TIA942- standards.

## Certifications





# SELECTED CLIENTS SAUDI ARABIA



## Presidency of State Security

Data Centers, Telepresence Studio with AV Solutions, Facility Upgrades



## Public Investment Fund

ICT Infrastructure Engineering and Installation, MEP and ELV Systems



## Saudi Data & AI Authority

Tier 3 Data Centers and Command Centers Design-Build, ICT & ELV, Cybersecurity



## Ministry of Interior

Tier 3 Data Center and Command Centers Design-Build-Operate, IT Engineering and Digital Government



## Saudi Arabian Military Industries

ICT Infrastructure Engineering and Installation, MEP and ELV Systems



## Security Forces Medical City

Complete Smart City Solutions including 31 ICT Systems and Data Centers



## Ministry of Communication and IT

MCIT Data Center provided a full scope of MEP works



## National Travellers Security Center

24/7 Command Center & Data Center. Design and Build - greenfield facility



## Ministry of Education

Complete ICT Infrastructure Development for Universities



## Mobily Data Center

Uptime Institute Tier III certified for Design and Constructed Facility



## Alrajhi Bank

Design & Build, 300 Seats, 7/24 Command Center



## NCB Bank

Uptime Tier IV Certification for design and constructed facility



## Princess Nora Bint Abdul Rahman University

Integrated building engineering services and a full scope of MEP works



## National Information Center

Design & Build SOC 7/24



## Yasref Data center

Uptime Tier III certified for design & constructed Facility



## Saudi Police

Emergency Response Centers (911) Design-Build, ICT & ELV, Cybersecurity

# SELECTED CLIENTS USA



## Department of Justice, Federal Bureau of Investigation (FBI)

Infrastructure Management Network & RSA Operations



## Federal Aviation Administration (FAA)

IT Infrastructure Management



## Department of Veteran Affairs

Primary Data Center Build and Management



## US Defense Health Agency (DHA) Military Health System (MHS)

US Defense Health Agency (DHA) Military Health System (MHS)



## Federal Emergency Management Agency (FEMA)

IT Transformation from Legacy to Service Oriented Architecture



## Criminal Justice Information Services (CJIS)

FBI Biometric Fusion Center Commissioning & Testing



## Department of the Navy NAVFAC (Facilities)

MEP Engineering and Implementation



## United States Bureau of Census

Application Development, Testing, Systems & Security Support



## Bureau of Alcohol, Tobacco Firearms and Explosives

Network Management Support Center



## Department of Commerce, International Trade Admin

Secure Space Infrastructure



## Silver Spring ATC Rehabilitation

Design, Engineering and Build for Multiple Metro Lines



## King Fahad Medical City



## King Abdullah Sports City



## Technology Control Co.



## The Saudi Investment Bank



## Alibaba Cloud



## King Abdullah Economic City



## Washington Suburban Sanitary Commission



## INOVA Health



## National Institute of Health



## National Oceanographic & Atmospheric Administration



## US Department of Transportation

# ONE TEAM

We are ICS Arabia, a company of innovators and developers committed to building a smarter, more technologically advanced, and safer future.

Our team consists of highly committed, dedicated, and results-oriented professionals with exceptional abilities across a wide range of disciplines. Team ICS Arabia upholds the highest ethics and values, respecting diversity, trust, integrity, and transparency. We work together with passion, as one team, toward a common future that drives us to go beyond conventional thinking, foster creativity, and achieve unmatched results. We diligently incorporate the latest technology to bring advancements and innovative solutions to our customers, guiding their most complex missions.



**Khanh Ho-si**  
EVP, Engineering Services



**Nazir Ahmed**  
VP, Finance



**Dr. Kholood Al Nutaifi**  
Advisory to the Board



**Ahmad Mansoor**  
Capital Projects



**Essam Refaat**  
Passive Technologies



**Dr. Moiz Khan**  
Structural Engineering



**Farah Zeid**  
Regional Channel Manager



**Sajid Khan**  
Procurement Manager



**Mohammed Al Masri**  
VCTA-DCV Engineering



**Mazen Al Johaif**  
Electrical Engineering



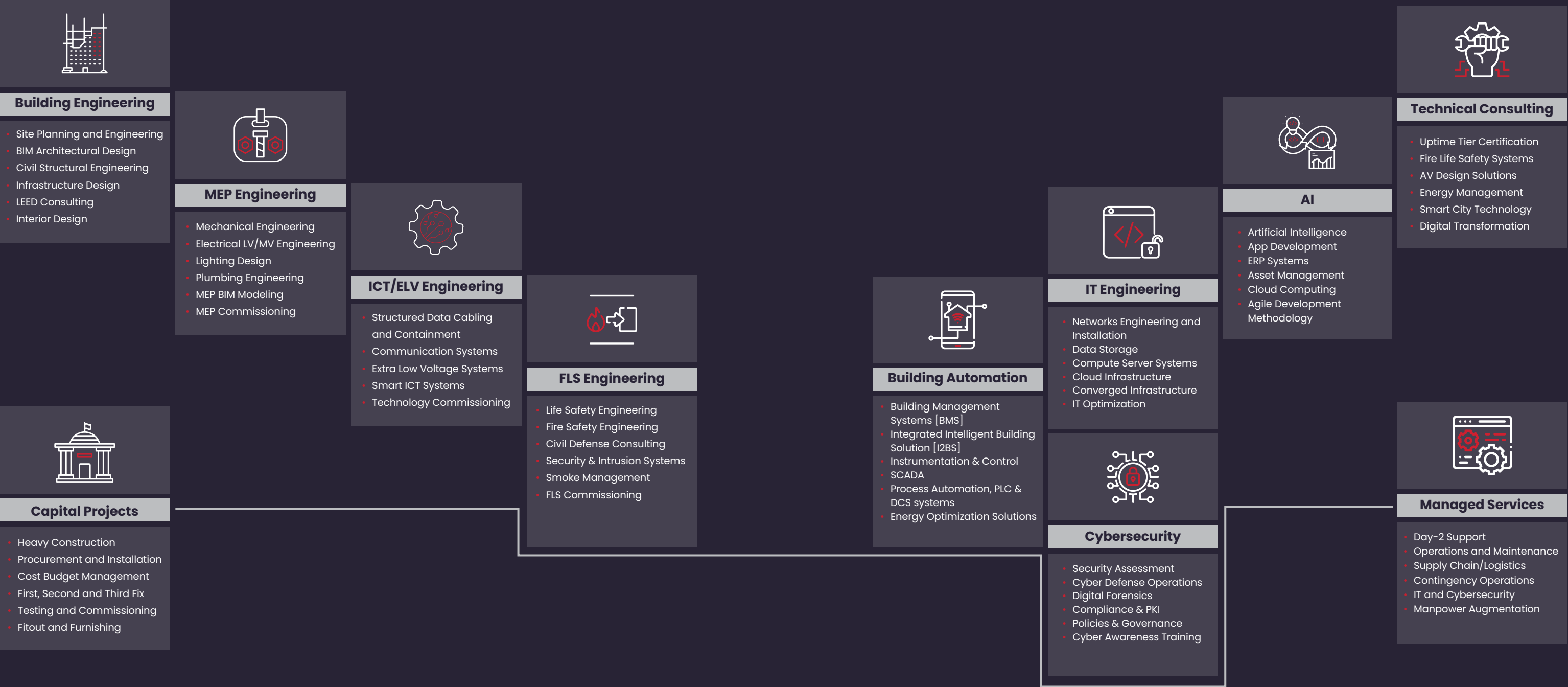
**Haifa Al Saad**  
HR Manager



**Dax Lumayno**  
Program / Construction Manager

# SERVICES

ICS Arabia tackles our clients’ most complex challenges by delivering innovative, cost-effective, and cutting-edge solutions. As a trusted partner, we provide end-to-end services that span value-added engineering, building automation, digital infrastructure development, and digital enterprise solutions.





# SOLUTIONS



## Tier Certified Data Centers

- Uptime Institute Tiers Compliance
- Design – Build
- Networks, Systems and Storage Engineering & Management
- Cloud Computing and Storage
- Data Centre Optimization & Management
- Data Center Infrastructure Management (DCIM)



## Cloud Computing

- Government Cloud Solutions
- IT Systems Design/Development
- Big Data Infrastructure
- Virtualization
- Cloud Transformation
- Data Migration
- Cloud Cybersecurity Management

## Digital Government

- Digitization Strategy
- Enterprise Architecture
- IT Modernization/Transformation
- Smart Automation
- Big Data/Data Analytics
- Geospatial Data Visualization



## Artificial Intelligence

- Gen AI
- Sovereign AI
- Finblade AI
- Predictive Analytics
- Large Language Model Implementation
- Big Data



## Command & Control Center

- Network Operations Centers
- Security Operations Centers
- Public Security Surveillance Centers
- Hospital Operations Center
- Mission Critical (e.g. Security and Intelligence, Public Safety, Military)



## Industrial Automation

- System and Process Automation
- Smart Factory Design
- Robotics
- Industrial Internet of Things
- Enterprise Resource Planning (ERP)
- Cloud Integration

## Smart Cities and Building

- Physical Infrastructure Design
- Build Smart City ICT
- Smart Energy Management
- Smart Building Automation
- 5G Telecommunications



## Healthcare Technology

- Health Management Information System (HMIS)
- Electronic Medical Records (EMR)
- Patient Archiving & Communication System
- Internet of Medical Things (IoMT)
- Real Time Location Systems (RTLS)/Radio Frequency Identification (RFID)

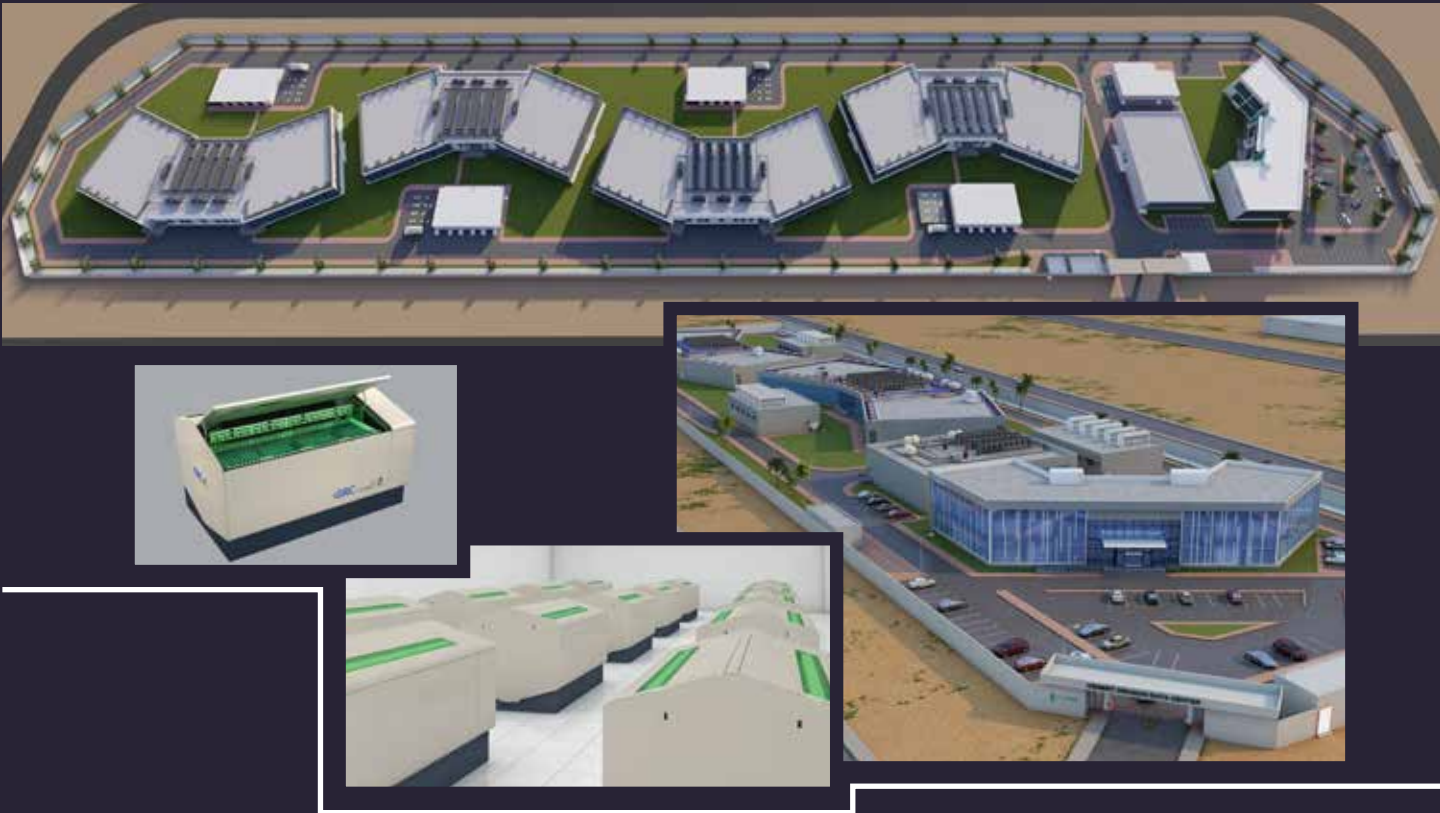




DESIGN-BUILD | WIP

# Desert Dragon Data Centers

187 MW of Hyperscaler and immersive Data Centers



## Key Facts

1.9 Billion USD Total Investment

187 MW Total Capacity

UPTIME CERTIFIED TIER III – 99.982%

- Design (TCDD)
- Facility (TCCF)
- Operational Sustainability (TCOS)

7000 Hyperscaler HAC Racks

120 Immersive Racks for AI hosting

Chiller Stations (N+1)

Power Generator Stations (N+1)

Co-working Offices with 295 Seats

NOC & SOC 24 Seats in each city

ICS Arabia holds a leading design and build role in the 187MW Desert Dragon Data Centers launched across the kingdom.

This impressive undertaking shall build numerous Hyperscaler and Immersive Data Centers for Commercial and Government hosting in line with the Vision 2030's aspired capacity augmentation. Desert Dragon Data Centers are built for a consortium of global leading Telecom companies.

This project seeks to introduce Immersive Cooling tanks specifically intended for extreme compute of AI models for the first time in Saudi Arabia.

Hyperscaler Racks shall accommodate 8KW to 13KW, while Immersive Racks shall accommodate up to 100KW

Each city campus shall include modern Co-working space office buildings for IT professionals.



DESIGN-BUILD | ON-GOING

# Al RAJHI Bank Command Center:



## Key Facts (Per Location)

158

Video Wall Screens

290

Number of Consoles Seats

>3000 sqm

Total Area

15

Command Center Teams

141 days

Start - Finish



Al Rajhi Bank's NRR Operations Command Center is a state-of-the-art facility centralizing all IT operations. As the largest bank in KSA, with assets of US\$ 80 billion, Al Rajhi Bank entrusted ICS Arabia to deliver a high-tech command center. The 3000 sqm facility includes the main Command Center, Defense SOC, Crisis room and Director offices.

It seats 300 operators across 15 teams, equipped with cutting-edge tech, including a 79 x 2 Laser Cube (BARCO™ ODLF-721) video wall for real-time monitoring and decision-making. Services included full turnkey refurbishment, covering ARC, MEP, ICT, and AV systems.



DESIGN-BUILD | DELIVERED

NIC: Security Operations Center (SOC)



ICS Arabia was contracted for turnkey design-build delivery of a new NIC Security Operations Center (SOC) in 2016.

National Information Center (NIC) Security Operations Center (SOC) is the main line of defense for all cyber threats to the Kingdom's most sensitive data hosting and network infrastructure within the NIC. The SOC is where 24/7, continuous monitoring of threats detection and their real-time response is undertaken.

SOC features the latest AV and IT solutions and custom-built fit-out. The facility is optimized for 24/7 operations and as a mission critical domain, it has its independent Data Center for Cyber and SOC monitoring. Specialized cyber tools and advanced highest security IT infrastructure were designed and implemented to support intelligence operations.

Scope of Work

Design-Build Security Operation Center:

- MEP Engineering and FLS Systems
- Structured Cabling
- Angled Video Wall Display
- Interactive Touch Screen Displays
- IT Engineering and Integration
- Cybersecurity
- Energy Management/Smart Metering

Enterprise Operations Center and VIP Command and Control Center:

- Conceptual to IFC Design
- IT Integration Detailed Design
- AV Detailed Design

DESIGN-BUILD | ON-GOING

31 ICT and ELV Systems for Smart Healthcare City SFMC, Riyadh and Jeddah



Our scope of work includes complete design, engineering, procurement, installation, and integration with BMS for 31 systems, including Structured Cabling, Data Networking, Nurse Call, IPTV, CCTV, Access Control, Parking Management, Distributed Antenna System, TETRA Mobile Radio, Lighting Control Systems, Infant Protection System, Real Time Location System, WIFI, Central Battery System, SCADA, I2BS and the latest Medical Technologies.

ICT/ELV systems are designed by following BICSI, TIA, NFPA, RCD, FGI, UL, and numerous international standards and guidelines. Designing was carried out in anticipation of the latest medical technological trends and has heavily relied on both IT convergence and Internet of Things (IoT) to best deliver an advanced facility at the time of launch.

Key Facts  
(Per Location)

- 10,000,000 lm  
Total Area
- 350,000  
Active IP Data Network Points
- 500,000 lm  
ISP and OSP Fiber Cable
- 20,600  
Security Devices
- 1,400  
Communication Racks



DESIGN-BUILD | DELIVERED

Rakeeza Tier III+ Data Center and 24/7 Operations Center



Key Facts

7,412 sq. m.

Buildout Area

463

Communication Racks

102 km

Fiber Cable

1,000+

Security Cameras

99.982%

Minimum Data Center Availability

ICS Arabia was contracted to Design and Build state-of-the-art Data Center and Operations Center with offices for 100+ resident engineers and Executive Leadership. Our scope of work included Civil/Structural Engineering, MEPF, ICT and ELV systems, custom fit-out and IT Engineering. Data Center IT Infrastructure was designed for scalable operations and has high capacity to support high-density and compute intensive requirements.

We are currently performing as a Day-2 support services provider for the 6MW Data Center and 24/7 Operations Center. ICS Arabia's engineers and technicians reside in the client's location. Facilities are managed according to ITIL and ISO standards.



DESIGN-BUILD | ON-GOING

SFMC: Tier III+ Data Center and Operations Center, Riyadh and Jeddah



Key Facts

(Per Location)

8,937 sq. m.

Buildout Area

500

Communication Racks

102 km

Fiber Cable

1,900

Network Switches

99.982%

Minimum Data Center Availability

SFMC Data Centers houses approx. 28,000 blade servers on 500 racks per location. Data centers are compliant with Uptime Institute Tier III rating and ensures minimum availability of 99.982% uptime, and expected downtime is not more than 1.6 hours. Prime-Power Generators serves the required IT load and supporting facilities in N+N fault tolerant and underground fuel storage provides at least 72-hours of continuous operation at full load. ICS Arabia is also delivering advanced Hospital Operations Centers with the latest AV and IT Solutions, and custom-designed furniture.





## Other Delivered Projects



### NTC: HC Command Center Building and Operations Center

ICS Arabia was contracted for 2 projects for NTC. In 2017, we delivered turnkey solution for the state-of-the-art Command Center and provided design services for NTC Headquarters Command Center building in 2018. The National Traveler Center (NTC) was established in order to provide 24/7/365 verification of visa authenticity and validation for thousands of travelers.

### PIF Tower

The PIF Tower (previously know CMA Tower) is the jaw dropping 80-story tall high-performance tower located in the heart of the KAFC. ICS Arabia was contracted for complete MEP Engineering and Installation works for 10 floors (approx. 17,000 sq.m.). Key responsibilities included Structured Cabling, LV and LC Cabling along with all containment, conduits and cable runs.installations.



### PNA Intelligence Command Center

ICS Arabia provided full-scope design-engineering-build services to Mol for their Intelligence Information Collaboration Center Facility. The project also included ICT & IT Infrastructure, Cloud solutions and cybersecurity implementation along with DevOps for required applications. The scope included a separate Data Center which was built to host the services for this Command Center.



### Madinah Governorate: eMajlis System and VTC Studios

ICS Arabia was contracted for design-build of the state-of-the-art main VTC Studio for his Excellency Governor of Madinah state. The requirement included the design and commissioning of multiple remote VTC conferencing studios within each regional city. AV Telepresence solution allows transmitting live videos, audio feed, and document camera feed from remote towns to the Governors Palace. The highest protocol cybersecurity systems were implemented.



### Saudi Police: 999 Emergency Response Command Centers

ICS Arabia was contracted to design and built multiple Command Centers for Saudi Police Emergency Response 999 Helpline in the Eastern Province. The Saudi Police Emergency service Facilities feature leading-edge AV technology solutions and custom-tailored fitout. The Dammam facility was a two Store Call and Command center on the ground floor and staff offices on the first floor.

### Public Safety TETRA Communication Labs

ICS Arabia was contracted to design-build multiple Public Safety TETRA Communication Labs These labs were hosted in existing MOI facilities and required a highly specialized security and Electrical capability to work for system performance. Cybersecurity and Public Safety communications networks were implemented in these facilities. Encryption Building for Public Safety Authority. Our work included workspace and IT optimization as per client requirement.



### Princess Nourah Bint Abdulrahman University

Princess Nourah Bint Abdulrahman University (PNU) is a public women's university in Riyadh, Saudi Arabia, and the largest women's university in the world. Our subsidiary company provided integrated building engineering services, a full scope of MEP works and implemented exceptional light design solutions.

### Riyadh Public Transport Control Center

Riyadh Public Transport Control Centre is located in the King Khalid International Airport area in Riyadh, KSA and was designed for the government officials working at the Riyadh Public Transport Department.

We provided Integrated Mechanical, Electrical and Plumbing services, and Energy Management solutions.



# PARTNERS

## ICT/ELV Technology

COMMSCOPE

SAMSUNG

CISCO

SIEMENS

CRESTRON

LG

BARCO

EDWARDS

AVAYA

Hewlett Packard Enterprise

BOSCH

DELL

parksol

MOBATIME

TriplePlay TELECOM

AtlasIED

orbility

ascom

NUANCE

## Data Centers and Construction

Uptime Institute

Bicsi

SHAKER CONSULTANCY GROUP

MDA

ARCADIS

## Information Technology

CISCO

JUNIPER NETWORKS

Microsoft

AVAYA

salesforce

Google

Azure

ORACLE

DELL EMC

f5

vmware

aws

paloalto

FORTINET

HUAWEI

## Large System Integration

Deloitte

IBM

Booz | Allen | Hamilton

xerox

ManTech  
Securing the Future

## MEP Partners

EATON

ABB

Schneider Electric

KOHLER SDMO

SIEMENS

Carrier

YORK

Tate

Honeywell

legrand

## Security

AXIS COMMUNICATIONS

PELCO

QVIGILON+

KRATOS

Gentec

tyco

LOGICVISION

LENEL

STANLEY

milestone

Hytera

prysm

optima

JR Technologies

Johnson Controls

## Cybersecurity

algosec

ANOMALI

CROWDSTRIKE

ENTRUST

ExtraHop

Forcepoint

FORTINET

Hive Pro

proofpoint

splunk

SYNOPSYS

ZEROFOX

sectona

CYBERX

ivanti

DARKTRACE

BlackBerry

ODYSSEY

CHECK POINT

ZINAD

NUTANIX

LINKSHADOW

tenable

efficient iP

CISCO

Barracuda

opentext

dokuvault

datamind

FORTRA





FinBlade AI is a **SDAIA Compliant** On-Premises suite of Gen-AI applications designed to optimize document management, data analysis, and workflows. It helps organizations by simplifying operations, automating tasks, and integrating with existing systems.

## Introducing 4 Powerful Gen-AI Modules in both Arabic and English.

### SEMANTIC SEARCH

Start talking to your organization's documents. Using cutting-edge RAG technologies, FinBlade AI allows you to derive insights from your documents in a completely new way.



### DATABASE SEARCH

Talk to your data in natural language and obtain insights comparable to an experienced data scientist.



### CHAT AI

Start a chat with the most advanced AI that is hosted inside your own enterprise or datacenter. We carefully select and deploy models (LLMs) that are optimally suited to your use cases.



### WORKFLOW AI

Ask AI agents to automate your routine tasks. The agent's responses are returned to you on a schedule that you create.



## Semantic Search

FinBlade AI's Semantic Search quickly understands complex documents, creates summaries and intelligent prompts.

- Simply upload all your organizations documents.
- FinBlade AI processes and understands them.

Now ask a question and FinBlade AI will answers from within organizations data. This avoids irrelevant search results.



## DB Search

DB Search simplifies data management with AI-powered SQL agents, delivering insights, charts, and streamlined analysis.

- Connect your organizations databases (excel, csv, SQL, MySQL etc.)
- AI processes and analyzes your data.
- Get insights as charts, graphs, or summaries.
- Save complex queries as "Recipes" to automate tasks.



## Chat AI

With Chat AI, start a fully encrypted (AES-256) chat with the most advanced AI models

- Finblade AI's Guardrails protect the organization by preventing employees from exposing or leaking Personally Identifiable Information PII and other sensitive information.



## Workflow AI

Workflow AI streamlines operations by automating tasks, analyzing data, and enhancing efficiency across teams.

- Automate and schedule tasks with AI agents.
- Guide AI in strategy development and problem-solving.
- Connect corporate email and messages for AI-managed responses.



## FinBlade AI Deployment Options

FinBlade AI offers flexible deployment options, allowing you to integrate it into your organization in three distinct ways.



### On-Premises - Sovereign AI Solution

Ensure robust data security and maintain strict control by hosting FinBlade AI on your own infrastructure. Gain full autonomy over your AI models and data, with this on-premises options.



### Hosted inside KSA

Deploy on your private cloud or utilize any local cloud service provider in KSA to ensure compliance with regional data sovereignty regulations.



### FinBlade AI Cloud (SaaS)

Instantly enroll your organization onto the app.finblade.ai Cloud, managed by FinBlade AI experts. Avail seamless updates, scalability, and round-the-clock support without the need for in-house maintenance.

## Solve AI adoption Challenges with FinBlade AI

### AI Adoption

**Struggling with high costs and technical challenges in AI adoption?**  
FinBlade AI simplifies AI adoption with user-friendly design and training, removing cost and technical barriers.

### Information Overload

**Finding it hard to process large data volumes and get meaningful insights?**  
It processes large datasets quickly, providing accurate insights and reducing analysis time.

### Cybersecurity Issues

**Concerned about data security and compliance in AI?**  
Ensuring data security and compliance through On-Premises deployment and the implementation of Zero Trust architecture.